



T&S
STERNAD
CHAROLAIS

and Friends

**ANNUAL
PRODUCTION
SALE**

**NEW SALE DATE
SATURDAY • MARCH 2ND, 2024**

Sale 1:00 PM • Lunch 12:00 Noon

*Selling over 50 Age Advantaged and Spring Yearling
Charolais Bulls and Commercial Females*



WELCOME TO THE 10TH ANNUAL T&S STRNAD CHAROLAIS AND FRIENDS ANNUAL BULL SALE

Sale Information

SALE LOCATION

At the Ranch - 1716 280th Rd - Formoso, KS (1/2 Mile North of Hwy 36 on 280th Rd)

SALE DAY CONTACT

Terrill Strnad 785.243.8600
Russ Lewis 620.874.0768
Glenn Sellhorst 402.380.4465

AUCTIONEER

Matt Lowery 308.750.6119

SALE MANAGER

Andee Marston 785.250.4449

SALE REPRESENTATIVES

Hadley Schotte, Charolais Journal 785.562.6632
Chris Buetler, Livestock Digital 785.250.4449
Brandon Frederick, Kansas Stockman 620.204.0841

MOTEL ACCOMODATIONS

America's Best Value Inn 785-527-2231
Super 8 785-527-2112

CATTLE DELIVERY

Free delivery within a 250 mile radius of the ranch. Bulls will be delivered the following week after the sale, weather permitting. Bring your trailer and take \$50 off per bull if taken home sale day.

ONLINE BIDDING

DV Auction 402.474.5557

INSURANCE

Jensen Livestock Insurance - Sheila Jensen
PO Box 197 - Courtland, Ks 66939
785-262-1116

HERD HEALTH

Stateline Veterinary Services
Dr. Eric Harms 785.374.3115

PHOTOGRAPHY

Sale photos by Megan Hoffman

TERMS

T&S Strnad Charolais is not liable for accidents that happen on our property. All sales are final and new owners are responsible and liable for purchases. Bulls must be picked up or delivered by March 15th. We will keep 1/3 semen interest for our own in herd use of all bulls in the sale. If a bull is collected, seller pays 100% cost at no expense to buyer. Buyer will retain full possession.

GUARANTEE

Bulls will be guaranteed for the first 60 days after turn out for reproductive injuries only. If you have reproductive injury a suitable bull will be offered to replace injured bull if no replacement bull is available a credit minus the salvage value will be given to next years sale. The injured bull must be examined by veterinarian with a letter stating injury. Insurance will be available on sale day.

UPDATE AND SUPPLEMENT SHEET

An update and supplement sheet will be available on sale day. Any announcements take precedence over any printed material.

NO BULLS WILL BE LOADED PRIOR TO THE CONCLUSION OF THE SALE

LUNCH WILL BE SERVED

PLEASE BRING THIS CATALOG WITH YOU ON SALE DAY!

*DUE TO THE AGE OF CERTAIN LOTS, ADJUSTED NUMBERS MAY NOT BE AVAILABLE IN THE CATALOG. PLEASE LOOK FOR UPDATES ON SALE DAY

Cant't make it to the sale? Watch it LIVE and bid in real-time on www.DVAUCTION.com Technical Support (402) 474-5557 | support@dvauction.com DVAuction Broadcasting Real-Time Auctions Please pre-register with DVAuction for the sale.

T&S STRNAD CHAROLAIS

and Friends

T&S STRNAD CHAROLAIS

TERRILL & SARAH STRNAD & FAMILY, FORMOSO, KS
PH. 785-243-8600 • TSSTRNAD@NCKCN.COM
TSSTRNADCHAROLAIS.COM

RUSS, DARLA AND STERLING LEWIS

LEOTI, KS • PH. 620-874-0768 • RUSSLEWIS33@GMAIL.COM

GLENN SELLHORST CHAROLAIS

FREMONT, NE • PH. 402-380-4465 • GLENSELLHORST@AOL.COM

Welcome

Cattlemen,

It is a great feeling to receive moisture in our area! As many producers like us experienced the effects of a drought and a change in weather has kindled a new fire for green grass in the spring. We are grateful for the moisture and have endured the best we could.

With the addition of the herds of Dale Funk and KKK Charolais Brian Kniep we have added additional cow numbers with different blood lines. We feel that the cattle have transitioned to our operation and will be a good fit into our herd. Sarah and I, feel very honored to continue the legacy of the Funk and Kniep herds. We thank Dale and Brian for this opportunity.

With the drought a major concern we decided to cut back our numbers and cull harder and capture the higher markets. We will offer a set of red heifers with Charolais calves at side and offer some black nosed Charolais/Angus heifer pairs and heavy bred serviced by a low birth weight Angus bull. The smoke pairs are out of bulls from a long time bull buyer. The numbers might be a few less than years past, but we feel the quality is better than ever.

As usual if you can't attend you will be able to bid and watch live on DVAAuction. Please give us a call if you would like to stop by and visit before sale day. We are always up to talking about cattle. Please feel free to give myself, Russ, Glenn or Andee a call.

Thank you for the interest in our program
Terrill Strnad





Lot
1

1 TS WILLEY K252

TATTOO: K252 BD: 2/28/22 POLLED REG: M992267

LT LEDGER Q332 P
WC LEDGER 5627 P ET
TTR CLARICE S1685
LT RUSHMORE 8060 PLD
VFR REAGAN 7R08 PLD
3N-VFR BROOKLYN 5B21 PLD

LT BLUEGRASS 4017 P
LT BRENDA 6120 PLD
M6 GRID MAKER 104 PET
JWK CLARICE J139 ET
LT RIO BRAVO 3181 P
LT BRENDA'S EASE 3055PLD
WC BOARDWALK 3216 P
VFR NATASHA 6F19 PLD

BW
79
ADJ WW
792
WW RATIO
103

CE	BW	WW	YW	MILK	SCROT	CW	REA	MARB	TSI
14.3	-2.5	66	117	26	1.3	27	0.68	0.19	261.16
20%	25%				25%				

Quite possibly one of the most exciting bulls that we have raised. Powerfully constructed with extra muscle and performance. Big time birth to weaning spread combined with top shelf marbling. Huge hipped and athletic if you need a bull that can cover a bigger group, he will fit the bill. As a bonus, you will be hard pressed to find a bull that has a better attitude toward life than this guy. A full brother to Wiley was the high seller three years ago commanding \$10,000



VFR REAGAN 7R08 PLD - DAM OF LOT 1

2 TS BANDIT K272

TATTOO: K272 BD: 3/19/22 POLLED REG: M980012

LT PATRIOT 4004 PLD
DSL PATRIOT Q25
DSL DENALI JEWEL 208
DSL GOLD RANDI 414
TS MISS MINNIE F862
MISS JV IMPRESSIVE Q85

LT LEDGER Q332 P
LK MISS RIO 2119
HCR DENALI 9304 PLD
DSL JEWEL MAKER U 8
FINK GOLD STANDARD 0153
MISS HCR RANDI 1090 PLD
RCR IMPRESSIVE M618
MISS JV NAVIGATOR 829 P

BW
79
ADJ WW
643
WW RATIO
97

CE	BW	WW	YW	MILK	SCROT	CW	REA	MARB	TSI
10.8	-2	58	103	24	0.8	24	0.73	0.15	246.23

Excellent made bull with a big hip and balanced design. An age advantaged bull that is ready for heavy service.



Lot
3

3 TS PATROIT K289

TATTOO: K289 BD: 5/10/22 POLLED REG: M992680

LT PATRIOT 4004 PLD	LT LEDGER 0332 P	<table border="1"> <tr><td>BW</td><td>78</td></tr> <tr><td>ADJ WW</td><td>781</td></tr> <tr><td>WW RATIO</td><td>96</td></tr> </table>	BW	78	ADJ WW	781	WW RATIO	96
BW	78							
ADJ WW	781							
WW RATIO	96							
DSL PATRIOT 025	LK MISS RIO 2119							
DSL DENALI JEWEL 208	HCR DENALI 9304 PLD							
WC LEDGER 5627 P ET	DSL JEWEL MAKER U 8							
TS MARY H053	LT LEDGER 0332 P							
TS MISS SUPERSTAR E747	TTR CLARICE S1685							
	CCC WC RESOURCE 417 P							
	SCR MISS SUPERSTAR 2118							

CE	BW	WW	YW	MILK	SCROT	CW	REA	MARB	TSI
13.7	-2.8	52	92	25	1.1	16	0.5	0.24	237.66
	25%							15%	

Stout and powerfully made Patriot grandson. Modest birth weight with exceptional carcass quality. This coming two year old is ready to go to work.

4 TS MR SMOKE K290

TATTOO: K290 BD: 5/30/22 POLLED REG: M992681

GS MR SMOKESTER 8006	JDI SMOKESTER J1377 P ET	<table border="1"> <tr><td>BW</td><td>80</td></tr> <tr><td>ADJ WW</td><td>852</td></tr> <tr><td>WW RATIO</td><td>104</td></tr> </table>	BW	80	ADJ WW	852	WW RATIO	104
BW	80							
ADJ WW	852							
WW RATIO	104							
TS SMOKE SIGNAL H032	WC MISS DUCHESS 0077 P							
TS MISS RESOURCE E742	CCC WC RESOURCE 417 P							
WC MONUMENTAL 5524 P	MISS JV IMPRESSIVE Q85							
TS MISS JULIET H016	LT RUSHMORE 8060 PLD							
SCR MISS TRIUMPH 3113	WC ASTA 0505 P							
	SCR TUFFY 0119							
	SCR MISS PERFECT 5025							

CE	BW	WW	YW	MILK	SCROT	CW	REA	MARB	TSI
9	-0.5	71	122	27		35	0.94	0.1	260.74
		20%	25%			15%	9%		

Big spread bull that features a negative BW and goes up to 122 on YW. Loads of performance with extra muscle shape and power.

5 TS/DSL MR LOCK 3001

TATTOO: 3001 BD: 9/3/22 POLLED REG: EM993104

LT LEDGER 0332 P	LT BLUEGRASS 4017 P	<table border="1"> <tr><td>BW</td><td>92</td></tr> <tr><td>ADJ WW</td><td>592</td></tr> <tr><td>WW RATIO</td><td>100</td></tr> </table>	BW	92	ADJ WW	592	WW RATIO	100
BW	92							
ADJ WW	592							
WW RATIO	100							
ACE-ORR LOCK N LOAD 243P	LT BRENDA 6120 PLD							
ORR'S MS PETUNIA 941P	ACE-ORR MAKERS MARK 689							
TR PZC RAPID FIRE 9775 ET	ORR'S MS PETUNIA 0054 ET							
WC MISSY 3214 P ET	TR MR FIRE WATER 5792RET							
WCCC MISS ALLIANCE 428	THOMAS MS IMPRESSIVE0641							
	SCC ALLIANCE 0026							
	SCC LADY MAC K118							

CE	BW	WW	YW	MILK	SCROT	CW	REA	MARB	TSI
8.9	0.6	69	127	20	1.4	31	0.82	0.19	268.42
		20%	20%		15%	25%	25%		20%

Super cool made big outlined son of Lock N Load. Backed by one of the great donor females WC Missy 3214. Loads of spread to his EPD profile that ranks in the top 20% WW, YW and TSI. - Maternal brother to lot 6.



Lot
5



Lot
6

6 TS/DSL INFERNO 3002

TATTOO: 3002 BD: 9/3/22 POLLED REG: EM993105

LT RUSHMORE 8060 PLD
WC INFERNO 6561 P
WC ASTA 0505 P
TR PZC RAPID FIRE 9775 ET
WC MISSY 3214 P ET
WCCC MISS ALLIANCE 428

LT RIO BRAVO 3181 P
LT BRENDA'S EASE 3055PLD
LT BLUE VALUE 7903 ET
WC ASTA 8210
TR MR FIRE WATER 5792RET
THOMAS MS IMPRESSIVE0641
SCC ALLIANCE 0026
SCC LADY MAC K118

BW	95
ADJ WW	600
WW RATIO	Actual

CE	BW	WW	YW	MILK	SCROT	CW	REA	MARB	TSI
10.1	0.0	66	121	28 25%	1.1	35 15%	0.74	0.21 20%	261.66

Another cool son of the donor matron WC Missy 3214, this time by the hot herd sire Inferno. Long bodied, huge hip with heavy structure. He should leave a profitable set of calves for market. Maternal brother to lot 5.

7 GS PLATEAU 2220

TATTOO: 2220 BD: 9/21/22 POLLED REG: M981593

PVF RIDGE 7142
GS MR PLATEAU 2006
RLL EATONS MISS LEDGER 20533 P
M&M OUTSIDER 4003 PLD
WC CLARICE 8739 P ET
WC CLARICE 2214 P ET

SCC O'RAILLE 181C PLD
PVF CHISUM 1340
LT LEDGER 0332 P
EATONS MISS BUSBY 00649 POLL
LT LONG DISTANCE 9001 PLD
M&M MS CARBINE 1567 PLD
LT LEDGER 0332 P
JWK CLARICE J139 ET

BW	81
ADJ WW	872
WW RATIO	98

CE	BW	WW	YW	MILK	SCROT	CW	REA	MARB	TSI
10.5	-0.2	66	120	24	1.2 25%	27	0.78	0.15	261.06

Look to add a pile of performance from this Plateau son. 2220 is backed by the ever popular Clarice cow family originating from the Wright program. With an adjusted WW of 872, you can count on him to deliver.

8 TS BIG RIVER K295

TATTOO: K295 BD: 9/19/22 POLLED REG: M992710

EC RIVIERA 141 PLD
EC BIG DADDY 305 PLD
EC LEDGER'S LADY 305 PLD
CCC WC RESOURCE 417 P
TS MISS SWIMMING THE POND D610
TS MS DUKE T1TWP

EC REVELATION 5030 PLD
EC TENACITY 141 PLD
LT LEDGER 0332 P
EC-GF FLAWLESS 066 PLD
LT RUSHMORE 8060 PLD
WC CCC BLUE GIRL 1528 P
ANKONIAN DUKE G034
TS STAR CHILD M19P

BW	80
ADJ WW	593
WW RATIO	100

CE	BW	WW	YW	MILK	SCROT	CW	REA	MARB	TSI
16.8 7%	-3.4 15%	66	102	24	0.9	22	0.65	0.16	241.58

A calving ease option from our leading donor D610. Her influence is strong in this sale, and you will see why she has been such a consistent producer in our program.

Maternal brothers sell as lots 10, 11 and 12.

9 TS QUESO K292TW

TATTOO: 292TW BD: 9/4/22 POLLED REG: M992709

EC RIVIERA 141 PLD
EC BIG DADDY 305 PLD
EC LEDGER'S LADY 305 PLD
CCC THE ANSWER T119
TS MISS ROCKY ANSWER 1110
TSMISS ROCKY T23P

EC REVELATION 5030 PLD
EC TENACITY 141 PLD
LT LEDGER 0332 P
EC-GF FLAWLESS 066 PLD
M6 FULL THROTTLE 2138 PET
CCC MS WINDY BESS R06PET
RCR IMPRESSIVE K061
TS MISS ROCKY 9706P

BW	65
ADJ WW	563
WW RATIO	100

CE	BW	WW	YW	MILK	SCROT	CW	REA	MARB	TSI
12.2	-1.5	67	109	21	1.1	27	0.65	0.09	246.43

Moderate birth and ample performance profile make him an ideal candidate to use in a variety of situations.



Lot
11



Lot
10

10 TS GREEN RIVER L423ET

TATTOO: L423 BD: 2/27/23 POLLED REG: EM992673

LT LEDGER 0332 P
WC LEDGER 5627 P ET
TTR CLARICE S1685
CCC WC RESOURCE 417 P
TS MISS SWIMMING THE POND D610
TS MS DUKE TITWP

LT BLUEGRASS 4017 P
LT BRENDA 6120 PLD
M6 GRID MAKER 104 PET
JWK CLARICE J139 ET
LT RUSHMORE 8060 PLD
WC CCC BLUE GIRL 1528 P
ANKONIAN DUKE G034
TS STAR CHILD M19P

BW
80
ADJ WW
814
WW RATIO
107

CE	BW	WW	YW	MILK	SCROT	CW	REA	MARB	TSI
11.2	-0.8	73	115	20	1	21	0.61	0.22	254.31
		15%						20%	

A powerhouse performer. Stout featured with plenty of rib shape and foot size. His ample performance ranks in the top 15% for WW and top 20% for MARB with a modest BW. An ET son of our donor matron D610 and Ledger 5627 that went to herd bull heaven this summer.

Full brothers sell as lots 11 and 12 and a maternal brother to lot 8.



TS MISS SWIMMING THE POND - DAM OF LOTS 8, 10, 11 AND 12

11 TS LITTLE BLUE RIVER L422ET

TATTOO: L422 BD: 2/27/23 POLLED REG: EM992670

LT LEDGER 0332 P
WC LEDGER 5627 P ET
TTR CLARICE S1685
CCC WC RESOURCE 417 P
TS MISS SWIMMING THE POND D610
TS MS DUKE TITWP

LT BLUEGRASS 4017 P
LT BRENDA 6120 PLD
M6 GRID MAKER 104 PET
JWK CLARICE J139 ET
LT RUSHMORE 8060 PLD
WC CCC BLUE GIRL 1528 P
ANKONIAN DUKE G034
TS STAR CHILD M19P

BW
85
ADJ WW
748
WW RATIO
98

CE	BW	WW	YW	MILK	SCROT	CW	REA	MARB	TSI
11.2	-0.1	67	107	20	1	21	0.61	0.22	247.37
								20%	

Style to burn on this flushmate brother. You must appreciate the angle and smoothness L422 possesses. Still big topped top with ample hip and ideal structure.

Full brothers sell as lots 10 and 12 and a maternal brother to lot 8.



Lot
13

12 TS RED RIVER L424ET

TATTOO: L424 BD: 3/3/23 POLLED REG: EM992674

LT LEDGER 0332 P	LT BLUEGRASS 4017 P	<table border="1"> <tr><td>BW</td></tr> <tr><td>80</td></tr> <tr><td>ADJ WW</td></tr> <tr><td>724</td></tr> <tr><td>WW RATIO</td></tr> <tr><td>95</td></tr> </table>	BW	80	ADJ WW	724	WW RATIO	95
BW								
80								
ADJ WW								
724								
WW RATIO								
95								
WC LEDGER 5627 P ET	LT BRENDA 6120 PLD							
TTR CLARICE S1685	M6 GRID MAKER 104 PET							
CCC WC RESOURCE 417 P	JWK CLARICE J139 ET							
TS MISS SWIMMING THE POND D610	LT RUSHMORE 8060 PLD							
TS MS DUKE T1TWP	WC CCC BLUE GIRL 1528 P							
	ANKONIAN DUKE G034							
	TS STAR CHILD M19P							

CE	BW	WW	YW	MILK	SCROT	CW	REA	MARB	TSI
11.2	-0.8	65	104	20	1	21	0.61	0.22	245.75
								20%	

Not to be outdone by his brother L424 can hold his own. Same big outline as his brothers and balanced design. Make the trip to Formoso to see for yourself. Full brothers sell as lots 10, 11 and a maternal brother to lot 8.

13 TS RING THE BELL L369

TATTOO: L369 BD: 3/3/23 POLLED REG: M992269

LT LEDGER 0332 P	LT BLUEGRASS 4017 P	<table border="1"> <tr><td>BW</td></tr> <tr><td>80</td></tr> <tr><td>ADJ WW</td></tr> <tr><td>855</td></tr> <tr><td>WW RATIO</td></tr> <tr><td>101</td></tr> </table>	BW	80	ADJ WW	855	WW RATIO	101
BW								
80								
ADJ WW								
855								
WW RATIO								
101								
WC LEDGER 5627 P ET	LT BRENDA 6120 PLD							
TTR CLARICE S1685	M6 GRID MAKER 104 PET							
GS MR SMOKESTER 8006	JWK CLARICE J139 ET							
TS ANNABELL H031	JDJ SMOKESTER J1377 P ET							
MS IKE SOLUTION 6058	WC MISS DUCHESS 0077 P							
	DCR MR SOLUTION W13							
	MS IKE SEBASTION 4106							

CE	BW	WW	YW	MILK	SCROT	CW	REA	MARB	TSI
12.4	-1.7	69	128	23	1.9	34	0.95	0.1	270.9
		25%	15%		1%	15%	7%		15%

Like the name implies he "rings the bell" in terms of overall performance and growth. A scale busting 855 lb. adj. 205 weight with a negative BW EPD. His added dimension and shape create a balance look with muscle shape and style. He ranks in the top 7% for REA and top 15% for TSI.

14 DSL DISTANCE LEDGER 304

TATTOO: 304 BD: 3/5/23 POLLED REG: M992208

LT LEDGER 0332 P	LT BLUEGRASS 4017 P	<table border="1"> <tr><td>BW</td></tr> <tr><td>90</td></tr> <tr><td>ADJ WW</td></tr> <tr><td>635</td></tr> <tr><td>WW RATIO</td></tr> <tr><td>95</td></tr> </table>	BW	90	ADJ WW	635	WW RATIO	95
BW								
90								
ADJ WW								
635								
WW RATIO								
95								
WC LEDGER 5627 P ET	LT BRENDA 6120 PLD							
TTR CLARICE S1685	M6 GRID MAKER 104 PET							
TS BIG BUD C522	JWK CLARICE J139 ET							
DSL BIG DISTANCE 740	WC CCC BUD HEAVY 903 PLD ET							
DSL MISS DISTANCE 504	MISS JV IMPRESSIVE Q85							
	WC GOING THE DISTANCE 2538							
	RCR MS UNO CHROME A042							

CE	BW	WW	YW	MILK	SCROT	CW	REA	MARB	TSI
9.9	-0.1	58	104	20	1.2	21	0.59	0.15	246.26
					25%				

Stellar Ledger son that traces back to some of our foundation genetics. 304 has longevity, performance and balanced genetic profile.

15 DSL LEDGER 305

TATTOO: 305 BD: 3/5/23 POLLED REG: M992201

LT LEDGER 0332 P	LT BLUEGRASS 4017 P	<table border="1"> <tr><td>BW</td></tr> <tr><td>94</td></tr> <tr><td>ADJ WW</td></tr> <tr><td>622</td></tr> <tr><td>WW RATIO</td></tr> <tr><td>93</td></tr> </table>	BW	94	ADJ WW	622	WW RATIO	93
BW								
94								
ADJ WW								
622								
WW RATIO								
93								
WC LEDGER 5627 P ET	LT BRENDA 6120 PLD							
TTR CLARICE S1685	M6 GRID MAKER 104 PET							
CCC BLUE BUD 309 PLD	JWK CLARICE J139 ET							
SLC BUDS HARVEST G41P	WC CCC BUD HEAVY 903 PLD ET							
SLC MISS HARVESTOR 1229P	CCC VALUABLE MOLLY 06 PLD							
	FC HARVESTER 814 P							
	TS MISS SCHURRTOP S33P							

CE	BW	WW	YW	MILK	SCROT	CW	REA	MARB	TSI
10.2	-0.3	55	98	15	1.2	17	0.56	0.21	243.7
								20%	

Smooth built with added eye appeal and structurally sound. Look at the added marbling and carcass quality he will bring to your calf crop.

16

TS AIRLINER L390

TATTOO: L390 BD: 3/17/23 POLLED REG: M992548

LT LEDGER 0332 P
 WC LEDGER 5627 P ET
 TTR CLARICE S1685
 CCC WC RESOURCE 417 P
 TS MISS SUPERSTAR E747
 SCR MISS SUPERSTAR 2118

LT BLUEGRASS 4017 P
 LT BRENDA 6120 PLD
 M6 GRID MAKER 104 PET
 JWK CLARICE J139 ET
 LT RUSHMORE 8060 PLD
 WC CCC BLUE GIRL 1528 P
 CCR HAMS SUPERSTAR U305P
 KF MISS BRONCO 0131

BW
89
ADJ WW
768
WW RATIO
116

CE	BW	WW	YW	MILK	SCROT	CW	REA	MARB	TSI
10.2	-0.5	69	107	27	0.8	26	0.7	0.28	246.98
		20%						7%	

Big spread from BW to YW with breed leading figures. Take time to find this long, smooth made angular bull. He can make an immediate impact on your breeding program.



Lot
16

17

TS THE SOURCE L399

TATTOO: L399 BD: 3/20/23 POLLED REG: M992550

LT LEDGER 0332 P
 WC LEDGER 5627 P ET
 TTR CLARICE S1685
 CCC WC RESOURCE 417 P
 TS FULL SOURCE F808
 TS MISS STRIKING ANSWER 1105

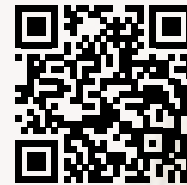
LT BLUEGRASS 4017 P
 LT BRENDA 6120 PLD
 M6 GRID MAKER 104 PET
 JWK CLARICE J139 ET
 LT RUSHMORE 8060 PLD
 WC CCC BLUE GIRL 1528 P
 CCC THE ANSWER T119
 TS MISS STRIKING S28 P

BW
85
ADJ WW
753
WW RATIO
113

CE	BW	WW	YW	MILK	SCROT	CW	REA	MARB	TSI
8.9	-0.1	83	136	27	1.1	34	0.76	0.31	276.44
		2%	7%			15%		5%	9%

L399 might be the best genetics profile of all the Ledger 5627 sons in the sale. Look at his EPD's boxes and see how many traits he ranks in the top 2% for WW, top 5% for MARB, top 7% for YW and top 10% for TSI.

View Videos, Register and Bid Online
through DVAAuction.com



DVAuction
Broadcasting Real-Time Auctions

SPRING YEARLING BULLS

From the Sale Manager

Welcome to the 10th Annual T&S Charolais and Friends Productions Sale. The Strnad family have work tirelessly to amass a production oriented Charolais herd. Terrill, his wife Sarah along with Emma, Wyatt, Dalton and Colt are some of the finest, hardest working people you will meet in the cattle business. They have vigilantly strived to produce functional cattle that increase profitability, weaning weights and stay practice in a real world environment. T&S Charolais and friends, Russ & Darla Lewis Charolais and Sellhorst Charolais have produced a great set of bulls to evaluate.

As we move into this year's offering you will find bulls that fit the needs of every commercial operator. Thick ended, stout bulls are featured throughout this catalog. If you have a couple of extra minutes study the lot 1 bull. A super gentle two year old that is big barreled with a huge square hip. Lot 25, a Bravo son, the big time performance bull that posted an adjusted WW of 886 pounds. Make sure you find lot 20 the Long Distance son from Russ. A stout and stylish bull that will leave a lasting impact on any herd. Also, Glenn has an impressive Crest son that tracks to the ever popular AI stud bull Ridge 7142 as lot 19.

Again, let me welcome you to join us March 2nd at 1:00 in Formoso, KS. If you can't join us in person, make sure to log into DVAAuctions.com for distance bidding. Also, if you need more information, please don't hesitate to give myself or anyone of the owners listed in the catalog a call.

Thank you
Andee Marston



Lot 18

18 TS WATER JACKET L321

TATTOO: L321 BD: 2/14/23 POLLED REG: M992538

<p>PVF RIDGE 7142 WIA BACKWATER JACK 060 P BRCHE TR DORY 6501 IKE ALL STATE 3159 KKK MISS ALL STAR 6310 FC MS MARBLER 2210 P</p>	<p>SCC O'RAILLE 181C PLD PVF CHISUM 1340 M&M OUTSIDER 4003 PLD TR MS KATIE 4724B ET KEYS ALL STATE 149X MISS IKE GRID 8028 FC MARBLER 0358 P FC MS CHARLIE 602 P</p>	<table border="1"> <tr><td>BW</td></tr> <tr><td>83</td></tr> <tr><td>ADJ WW</td></tr> <tr><td>748</td></tr> <tr><td>WW RATIO</td></tr> <tr><td>112</td></tr> </table>	BW	83	ADJ WW	748	WW RATIO	112
BW								
83								
ADJ WW								
748								
WW RATIO								
112								

CE	BW	WW	YW	MILK	SCROT	CW	REA	MARB	TSI
10.6	-1.1	65	120	29	1.3	27	0.87	-0.08	258.36
				25%	25%		20%		

Here is one that gets Terrill excited. An outcross pedigree that stems back to the popular AI sire Backwater Jack. Loaded with style, muscle shape and a square hip. Strong carcass and maternal traits make him a viable option for any operation.



WIA BLACKWATER JACK 060P - SIRE OF LOT 18



Lot 19

19 GS MR CREST 2317

TATTOO: 2317 BD: 1/8/23 POLLED REG: M987475

<p>PVF RIDGE 7142 GS MR CREST 2007 RLL EATONS MISS LEDGER 20533 P CCC WC REDEMPTION 7143 PLD ET GS MS REDEMPTION 9010 SSC SOUTHERN BELLE 1516P</p>	<p>SCC O'RAILLE 181C PLD PVF CHISUM 1340 LT LEDGER 0332 P EATONS MISS BUSBY 00649 POLL CCC WC RESOURCE 417 P WC ROLLS ROYCE 3177 P ET M6 BELLS & WHISTLES 258 P SC MISS 452D 1224 P</p>	<table border="1"> <tr><td>BW</td></tr> <tr><td>83</td></tr> <tr><td>ADJ WW</td></tr> <tr><td>842</td></tr> <tr><td>WW RATIO</td></tr> <tr><td>105</td></tr> </table>	BW	83	ADJ WW	842	WW RATIO	105
BW								
83								
ADJ WW								
842								
WW RATIO								
105								

CE	BW	WW	YW	MILK	SCROT	CW	REA	MARB	TSI
5.7	1.2	71	128	20	1	28	0.89	0.34	272.75
		15%	15%				15%	3%	15%

Glenn really pushed the envelope to bring a strong set of bulls. 2317 sets the standard for pounds of performance while maintaining a stylish look. Big hipped with added length and dimension there is not a hole in this one.

20 GS MR CREST 2313

TATTOO: 2313 BD: 1/7/23 POLLED REG: M987476

<p>PVF RIDGE 7142 GS MR CREST 2007 RLL EATONS MISS LEDGER 20533 P WC DOUBLETREE 2009 P RF MS WENDY 920 RF MISS WENDY 617</p>	<p>SCC O'RAILLE 181C PLD PVF CHISUM 1340 LT LEDGER 0332 P EATONS MISS BUSBY 00649 POLL LT LONG DISTANCE 9001 PLD WC PRAISE 0058 P CCC WC RESOURCE 417 P MISS HCR WENDY 7082 PLD</p>	<table border="1"> <tr><td>BW</td></tr> <tr><td>80</td></tr> <tr><td>ADJ WW</td></tr> <tr><td>782</td></tr> <tr><td>WW RATIO</td></tr> <tr><td>98</td></tr> </table>	BW	80	ADJ WW	782	WW RATIO	98
BW								
80								
ADJ WW								
782								
WW RATIO								
98								

CE	BW	WW	YW	MILK	SCROT	CW	REA	MARB	TSI
9.5	-0.5	59	110	22	0.8	21	0.77	0.35	259.14
								3%	

A big spread Ridge 7142 grandson that brings exception carcass quality to the table. Great pedigree, amazing performance and awesome phenotype in one package.



Lot
22



Lot
21

SPRING YEARLING BULLS

21 GS MR SUMMIT 2306

TATTOO: 2306 BD: 1/2/23 POLLED REG: M987581

PVF RIDGE 7142	SCC O'RAILLE 181C PLD	BW
FC RF SUMMIT 0018 ET	PVF CHISUM 1340	78
M6 MS JEWEL 428 P	M6 COOL REP 8108 ET	ADJ WW
RBM TR RHINESTONE Z38	M6 MS NEW JEWEL 0155 PLD	800
RF MS STEALTH 2052 ET	LT BLUEGRASS 4017 P	WW RATIO
RF MS STEALTH 964 P	HC RHINESTONE 5100	100
	WDZ FIREMAKER 6062 P ET	
	M&M MS STEALTH 7515 PLD ET	

CE	BW	WW	YW	MILK	SCROT	CW	REA	MARB	TSI
10.9	-1.1	57	101	25	1.1	15	0.55	0.17	244.79

Big and burly 2306 also comes with a killer look. The first Summit calves have been impressive in every way. His offspring will come easy, grow quick and have a superb look.

22 GS MR SUMMIT 2310

TATTOO: 2310 BD: 1/3/23 POLLED REG: M987583

PVF RIDGE 7142	SCC O'RAILLE 181C PLD	BW
FC RF SUMMIT 0018 ET	PVF CHISUM 1340	78
M6 MS JEWEL 428 P	M6 COOL REP 8108 ET	ADJ WW
CCC WC RESOURCE 417 P	M6 MS NEW JEWEL 0155 PLD	848
RF MISS TANYA 919	LT RUSHMORE 8060 PLD	WW RATIO
RF MISS TANYA 615	WC CCC BLUE GIRL 1528 P	106
	MEAD-RF X-FACTOR G584 P	
	SF MISS TANYA 4016 P	

CE	BW	WW	YW	MILK	SCROT	CW	REA	MARB	TSI
10.1	-1.2	65	112	32 8%	0.9	21	0.73	0.12	253.04

Just like his half-brothers you will be hard pressed to find bulls with this much shape and style that pack on the growth. He is as impressive in his picture as he is on the move.

23 GS MR SUMMIT 2305

TATTOO: 2305 BD: 1/2/23 POLLED REG: M987580

PVF RIDGE 7142	SCC O'RAILLE 181C PLD	BW
FC RF SUMMIT 0018 ET	PVF CHISUM 1340	75
M6 MS JEWEL 428 P	M6 COOL REP 8108 ET	ADJ WW
RF RENEW 6221 ET	M6 MS NEW JEWEL 0155 PLD	745
RF MS DUCHESS 938	CCC WC RESOURCE 417 P	WW RATIO
RF MS DUCHESS 6003 ET	CREEK CUT GRETA 576P ET	93
	MCF BOHANNON 305A	
	RF MS DUCHESS 202 P	

CE	BW	WW	YW	MILK	SCROT	CW	REA	MARB	TSI
14.6	-3.7	52	96	26		18	0.69	0.09	243.11
20%	15%								

Moderate birth weight and extra calving ease combined with stellar eye appeal come together here. Still keeps a great performance record, coming in the mid 700's for weaning.

24 GS MR SUMMIT 2308

TATTOO: 2308 BD: 1/3/23 POLLED REG: M987582

PVF RIDGE 7142	SCC O'RAILLE 181C PLD	BW
FC RF SUMMIT 0018 ET	PVF CHISUM 1340	66
M6 MS JEWEL 428 P	M6 COOL REP 8108 ET	ADJ WW
CCC WC RESOURCE 417 P	M6 MS NEW JEWEL 0155 PLD	719
RF MS ANGEL 907	LT RUSHMORE 8060 PLD	WW RATIO
RF MS ANGEL 514	WC CCC BLUE GIRL 1528 P	90
	LT INVESTMENT 2292 PLD	
	AC MS ANGEL 432 PLD ET	

CE	BW	WW	YW	MILK	SCROT	CW	REA	MARB	TSI
14.8	-3.7	48	89	27	1	20	0.72	0.12	236.77
20%	15%								

Calving ease in both sides of his pedigree. Excellent structure with some strong maternal genetics makes him an excellent choice to retain replacement females.



Lot
25



Lot
26



Lot
27

25 TS BIG TIME L364

TATTOO: L364 BD: 3/1/23 POLLED REG: M992543

WC BRAVO 6121 P ET
WC BRAVO 8576 P
WC MS TURBO 5640 P ET
RBM FARGO Y111
EC FARAH 803 PLD
EC MISS BLUE GRASS 184 PLD

LT RIO BRAVO 3181 P
LT BRENDA'S EASE 3055PLD
LT BLUE VALUE 7903 ET
SCR MS TURBO 7003
SPARROWS FARGO 811U
HC RHINESTONE 5100
LT BLUEGRASS 4017 P
EC NON SENSE 900 PLD

BW
76
ADJ WW
886
WW RATIO
105

CE	BW	WW	YW	MILK	SCROT	CW	REA	MARB	TSI
13.4	-2.4	68	124	29	1.1	31	0.74	0.06	264.05
		25%	20%	20%		20%			

Mr. Big Time right here. He came easy at birth and absolutely smashed the scales. L364 is one of the highest WW bulls we have ever raised. He posted an astounding 886 for 205 adj wt. The Bravo sons have flat got it done every year and this one is no exception. Look at his EPD profile for growth and performance.

26 EAS GOLDEN BOY L307

TATTOO: L307 BD: 1/23/23 POLLED REG: M992605

WC BRAVO 6121 P ET
WC BRAVO 8576 P
WC MS TURBO 5640 P ET
WC LEDGER 5627 P ET
GOLDEN GIRL J150
TS MISS SILVERS DISTANCE E733

LT RIO BRAVO 3181 P
LT BRENDA'S EASE 3055PLD
LT BLUE VALUE 7903 ET
SCR MS TURBO 7003
LT LEDGER 0332 P
TTR CLARICE S1685
SANDCREEK LONG DISTANCE 2021
MISS HCR SILVER 8000 PLD

BW
77
ADJ WW
677
WW RATIO
101

CE	BW	WW	YW	MILK	SCROT	CW	REA	MARB	TSI
13.1	-2.1	65	115	23	1.2	26	0.56	0.22	258.38
								20%	

Straight lined and huge hipped you will like the looks of this big spread Bravo. Big bodied and smooth design with phenomenal structure. Excellent carcass quality goes right along with him.

27 TS MONTANA L361

TATTOO: L361 BD: 3/1/23 POLLED REG: M992606

WC BRAVO 6121 P ET
WC BRAVO 8576 P
WC MS TURBO 5640 P ET
LT PATRIOT 4004 PLD
TS BETSY F820
TS MISS ROCKY CREEK C533

LT RIO BRAVO 3181 P
LT BRENDA'S EASE 3055PLD
LT BLUE VALUE 7903 ET
SCR MS TURBO 7003
LT LEDGER 0332 P
LK MISS RIO 2119
SANDCREEK LONG DISTANCE 2021
TS MISS ROCKY ANSWER 1110

BW
74
ADJ WW
753
WW RATIO
113

CE	BW	WW	YW	MILK	SCROT	CW	REA	MARB	TSI
12.4	-2.7	74	126	22	1.1	30	0.61	0.19	265.22
		25%	10%	20%		25%		25%	25%

Here is a long lined, loose structured bull that floats around the pen. He posted a ratio of 113 at WW time. Excellent turn and twist in his lower quarter with muscle shape and real power.

28 TS BRAVO L347

TATTOO: L347 BD: 2/24/23 POLLED REG: M992541

WC BRAVO 6121 P ET
WC BRAVO 8576 P
WC MS TURBO 5640 P ET
LT AFFINITY 6221 PLD
MISS HCR AFTON 0103 PLD
MISS HCR KINLEY 8083 PLD

LT RIO BRAVO 3181 P
LT BRENDA'S EASE 3055PLD
LT BLUE VALUE 7903 ET
SCR MS TURBO 7003
LT RUSHMORE 8060 PLD
LT ATHENA 1247
WCR KINGSBURY 116 P
MISS HCR LEAH 3507 PLD

BW
77
ADJ WW
676
WW RATIO
101

CE	BW	WW	YW	MILK	SCROT	CW	REA	MARB	TSI
11.5	-2.2	61	112	29	1	23	0.59	0.2	256.12
				20%				25%	

Straight maternal with excellent carcass merit. Look for him in the pens with his brothers. They are all peas in a pod.

29 DSL SANDCREEK 301

TATTOO: 301 BD: 2/28/23 POLLED REG: M992199

LT LONG DISTANCE 9001 PLD
SANDCREEK LONG DISTANCE Z021
CCR MISS SUPER X021 P
LT PATRIOT 4004 PLD
DSL GOLD PATRIOT 717
DSL MS GOLD STANDARD 402

LT SILVER DISTANCE 5342P
LT BELLE 7026 P
CCR RC SUPERMAN 0767 0658
CCR MISSTOPCHOICEN908PTW
LT LEDGER 0332 P
LK MISS RIO 2119
FINK GOLD STANDARD 0153
DSL PRIME 914 U 17

BW
83
ADJ WW
705
WW RATIO
105

CE	BW	WW	YW	MILK	SCROT	CW	REA	MARB	TSI
12.5	-2.1	70	123	6	0.9	23	0.65	0.21	265.38
		20%	25%					20%	25%

An excellent Long Distance son from Russ that checks all the boxes. 301 is big on phenotype with a burley look, extra rib and balanced design. He balances out with extra maternal power and strong carcass quality in a do it all package.



Lot
29

30 TS SANDCREEK L310

TATTOO: L310 BD: 1/30/23 POLLED REG: M992611

LT LONG DISTANCE 9001 PLD
SANDCREEK LONG DISTANCE Z021
CCR MISS SUPER X021 P
WC BRAVO 8576 P
TS MISS NELLIE J137
TS MISS ANNIE F809

LT SILVER DISTANCE 5342P
LT BELLE 7026 P
CCR RC SUPERMAN 0767 0658
CCR MISSTOPCHOICEN908PTW
WC BRAVO 6121 P ET
WC MS TURBO 5640 P ET
WC LEDGER 5627 P ET
FC MS RAPIDFIRE 6216P

BW
69
ADJ WW
709
WW RATIO
106

CE	BW	WW	YW	MILK	SCROT	CW	REA	MARB	TSI
14.8	-3.2	67	111	9	0.6	19	0.62	0.24	255.19
	20%	20%	30%					15%	

Curve bending genetic profile with excellent carcass figures. L310 is a smooth made, long bodied bull with a no hole's pedigree.

31 GS MR CAN AM 2314

TATTOO: 2314 BD: 1/7/23 POLLED REG: M987551

SCR TRIUMPH 2135
SCX JEHU 233E
SCX MISS MAGNUM 109X
LT RUSHMORE 8060 PLD
WC QUEEN 6295 P
WC QUEEN 1120 P

SCR TUFFY 0119
SCR MS BABY DOLL 7140
SCX HILARIO 49T
SCX MISS CHICO 48P
LT RIO BRAVO 3181 P
LT BRENDA'S EASE 3055PLD
LT STAGECOACH 8068 PLD
LT EASY QUEEN 7067 P

BW
82
ADJ WW
860
WW RATIO
107

CE	BW	WW	YW	MILK	SCROT	CW	REA	MARB	TSI
10.8	-0.9	69	141	22	1.3	31	0.58	0.06	281.9
			4%		25%	25%			5%

Big time spread with incredible performance. 2314 is the real deal. Huge hiped, powerfully constructed with a pleasing balanced design. Out of the increasing popular Jehu Ai bull that is known for adding performance, dimension and power. Top ranking growth and performance EPD profile and top 5% for TSI.

32 TS JEHU L343

TATTOO: L343 BD: 2/24/23 POLLED REG: M992540

SCR TRIUMPH 2135
SCX JEHU 233E
SCX MISS MAGNUM 109X
HIGH BLUFF CASANOVA 13C
FC MS CASANOVA 0202 P
FC MS 4225P OF 035-U908

SCR TUFFY 0119
SCR MS BABY DOLL 7140
SCX HILARIO 49T
SCX MISS CHICO 48P
SILVERSTREAM GEDDES G102
HIGH BLUFF ESPERENZA 15Y
MF 035 OF 6868 BG
CCR MISS PHASE U908 P

BW
83
ADJ WW
754
WW RATIO
113

CE	BW	WW	YW	MILK	SCROT	CW	REA	MARB	TSI
7.1	0.7	74	145	15	1	29	0.81	0.08	285.65
		9%	3%						3%

Stout and powerful with a cool design. He ranks in the top 5 % for YW and top 10% for WW EPD and just look at his ratio of 113@WW. Full brother to lot 33.



Lot
31

33 TS JEHU L348

TATTOO: L348 BD: 2/25/23 POLLED REG: M992542

SCR TRIUMPH 2135
SCX JEHU 233E
SCX MISS MAGNUM 109X
HIGH BLUFF CASANOVA 13C
FC MS CASANOVA 9208P
FC MS 4225P OF 035-U908

SCR TUFFY 0119
SCR MS BABY DOLL 7140
SCX HILARIO 49T
SCX MISS CHICO 48P
SILVERSTREAM GEDDES G102
HIGH BLUFF ESPERENZA 15Y
MF 035 OF 6868 BG
CCR MISS PHASE U908 P

BW
83
ADJ WW
735
WW RATIO
110

CE	BW	WW	YW	MILK	SCROT	CW	REA	MARB	TSI
7.3	0.7	72	142	14	1	29	0.81	0.08	283.28
		15%	4%						4%

Another of bulky make Jehu son that continues to bring the heat for weaning weight and performance. Stout individual with scale mashing presence. Full brother to lot 32.





Lot
34

34 TS RUSH SUMMIT L345

TATTOO: L345 BD: 2/24/23 POLLED REG: M992612

WCR COMMISSIONER 593 P
HBC SUMMIT 1H
HBC TEMPTATION 802F
LT RUSHMORE 8060 PLD
FC MS RUSHMORE 0220P
FC MS SUPERSTAR 1342

WCR COUNTY LINE 3132 P
WCR MS BRAVO 399 P
WC MILESTONE 5223 P
HBC BRIGHT LIGHTS 509C
LT RIO BRAVO 3181 P
LT BRENDA'S EASE 3055PLD
CCR HAMS SUPERSTAR U349P
FC MS JOSIE

BW	80
ADJ WW	663
WW RATIO	99

CE	BW	WW	YW	MILK	SCROT	CW	REA	MARB	TSI
14.8	-3.3	53	83	25	0.8	14	0.58	0.08	223.37
20%	15%								

Long bodied bull from the exciting herd sire Summit 1H. Strong calving ease genetics and sound maternal cow power.

35 TS SUMMIT RUSH L352

TATTOO: L352 BD: 2/26/23 POLLED REG: M992618

WCR COMMISSIONER 593 P
HBC SUMMIT 1H
HBC TEMPTATION 802F
LT RUSHMORE 8060 PLD
FC MS RUSHMORE 0221PET
FC MS SUPERSTAR 1342

WCR COUNTY LINE 3132 P
WCR MS BRAVO 399 P
WC MILESTONE 5223 P
HBC BRIGHT LIGHTS 509C
LT RIO BRAVO 3181 P
LT BRENDA'S EASE 3055PLD
CCR HAMS SUPERSTAR U349P
FC MS JOSIE

BW	77
ADJ WW	682
WW RATIO	103

CE	BW	WW	YW	MILK	SCROT	CW	REA	MARB	TSI
15.1	-2.9	55	85	26	0.8	14	0.58	0.08	224.73
15%	20%								

Climbs into the upper echelon for calving ease at 15.1. Backed by generations of strong maternal cow families.



Lot
36

36 TS BLUE RIDGE L383

TATTOO: L383 BD: 3/13/23 POLLED REG: M992547

LT AFFINITY 6221 PLD
SCR AFFINITY 9104
SCR MISS BUCKAROO 7015
SCR STONERIDGE 3171
KKK MISS BLUE RIDGE 8306
KKK ONCE IN A BLUE MOON 6322

LT RUSHMORE 8060 PLD
LT ATHENA 1247
SCR BRONCO 9026
CCR MISS PHASE U908 P
FC MARBLER 0355 P
SCR MISS MAPLE 9021
IKE SEBASTION3109
KKK MISS BLUE MOON 1346 P

BW	85
ADJ WW	797
WW RATIO	94

CE	BW	WW	YW	MILK	SCROT	CW	REA	MARB	TSI
8.9	-1	64	131	20	0.8				
			15%						

Negative birth to top 15% for YW. L383 is a true spread bull with a plenty of muscle shape and dimension.

37 TS CASH HOG L384

TATTOO: L384 BD: 3/13/23 POLLED REG: M992553

LT AFFINITY 6221 PLD
SCR AFFINITY 9104
SCR MISS BUCKAROO 7015
HIGH BLUFF CASANOVA 13C
FC MS CASANOVA 9207P
FC MS 4225P OF 035-U908

LT RUSHMORE 8060 PLD
LT ATHENA 1247
SCR BRONCO 9026
CCR MISS PHASE U908 P
SILVERSTREAM GEDDES G102
HIGH BLUFF ESPERENZA 15Y
MF 035 OF 6868 BG
CCR MISS PHASE U908 P

BW	75
ADJ WW	657
WW RATIO	99

CE	BW	WW	YW	MILK	SCROT	CW	REA	MARB	TSI
13.4	-1.7	62	121	22	0.9	22	0.8	0.14	266.19
									25%

The last of the Infinity sons out of a superb Casanova daughter. Balanced traits and solid performance figures make him an excellent selection. Full brother to lot 40.



Lot
38

38 TS TANKER L342

TATTOO: L342 BD: 2/24/23 POLLED REG: M992268

BHD PERSEUS B65 P
DC/CRJ TANK E108 P
CRJ MS ZYLEN C1587
HIGH BLUFF CASANOVA 13C
FC MS CASANOVA 0209P
SCR MISS MAPLE 9021

BHD ZEUS X3041
BHD MS ZEN Z27
SM ZYLEN A849 S
BHD MS TRADEMARK Z38
SILVERSTREAM GEDDES G102
HIGH BLUFF ESPERENZA 15Y
SCR CHICO 1033
SCR MISS LEGACY 6170

BW	82
ADJ WW	728
WW RATIO	98

CE	BW	WW	YW	MILK	SCROT	CW	REA	MARB	TSI
9.2	0	62	131	26	0.7	34	0.77	0.08	276.02
			15%			15%			9%

Tank E108 has become one of the most popular bulls in the Charolais breed. Lots of growth with real world performance help him solidify his reputation. L342 is no exception great look without sacrificing any performance. Check out his EPD figures above. Full brother to lot 39.

SPRING YEARLING BULLS

39 DSL LUNCH TIME 307

TATTOO: 307 BD: 3/7/23 POLLED REG: M992454

FF ABOUT TIME Y07
OW LEAD TIME 6294 PLD
OW MISS SANDCREEK 3031 PLD
VPI FREE LUNCH 708T
DSL MS FREE LUNCH 810
DSL JEWEL MAKER U 8

COOLEY ROYCE 1107T39
DC GRONA 146T
MC-OW SANDCREEK 375
OW MISS MAXIMIZER W13 PLD
LT RIO BLANCO 1234 P
VPI MISS DUCHESS 404 P
M6 GRID MAKER 104 PET
DSL DARLAS JEWEL P6

BW	83
ADJ WW	707
WW RATIO	105

CE	BW	WW	YW	MILK	SCROT	CW	REA	MARB	TSI
11.6	-3	62	116	28	1.3	19	0.59	0.28	263.81
	20%			25%	20%			8%	

Huge spread bull by Lead Time. Great calving ease with excellent performance numbers that translate to 105@WW and top shelf percentile rankings.



Lot
39

40 TS HOSS L378

TATTOO: L378 BD: 3/9/23 POLLED REG: M992546

LT AUTHORITY 7229 PLD
LT VORTEX 1320 PLD
LT BALLERINA 1012 PLD
WC LEDGER 5627 P ET
TS MISS CAROL H033
DSL GOLD DISTANCE 704

LHD CHOTEAU B1669 P
LT KATY 4273 PLD
LT BLUE VALUE 7903 ET
LT BALLERINA 9008 PLD
LT LEDGER 0332 P
TTR CLARICE S1685
FINK GOLD STANDARD 0153
MISS HCR DISTANCE 3000 P

BW	95
ADJ WW	808
WW RATIO	109

CE	BW	WW	YW	MILK	SCROT	CW	REA	MARB	TSI
3.5	2.7	73	120	25	1.3	23	0.58	0.2	252.81
		15%	30%		20%			25%	

If you are looking for cattle that will grow you can set your satchel down here. Over 808 pounds at WW with an EPD profile that makes a point.

41 TS VORTEX L335

TATTOO: L335 BD: 2/24/23 POLLED REG: M992539

LT AUTHORITY 7229 PLD
LT VORTEX 1320 PLD
LT BALLERINA 1012 PLD
SANDCREEK LONG DISTANCE 2021
TS MISS SCHURR DISTANCE B438
TS MS SCHURRTOP T39P

LHD CHOTEAU B1669 P
LT KATY 4273 PLD
LT BLUE VALUE 7903 ET
LT BALLERINA 9008 PLD
LT LONG DISTANCE 9001 PLD
CCR MISS SUPER X021 P
SCHURRTOP M S 011-2020 P
TS CHYNA K25P

BW	80
ADJ WW	671
WW RATIO	100

CE	BW	WW	YW	MILK	SCROT	CW	REA	MARB	TSI
11.3	-1.3	68	111	14	1.1	18	0.48	0.19	248.43
		25%							

Smooth made with a quiet disposition he brings strong maternal and carcass merit. Vortex was our selection in the LT Ranch sale in 2022. You will see more of his offspring in future sales.

42 DSL PUFFY 308

TATTOO: 308 BD: 3/9/23 POLLED REG: M992206

LT AUTHORITY 7229 PLD
SAT MOMENTUM 9303 P ET
M6 MS FRESH GRID 2155 P
WC LEDGER 5627 P ET
DSL MS PUFF 815
FANCY GREEK LADY DUKE 138 P

LHD CHOTEAU B1669 P
LT KATY 4273 PLD
M6 GRID MAKER 104 PET
M6 FRESH NANCY 130 P ET
LT LEDGER 0332 P
TTR CLARICE S1685
SCHRADER'S DUKE 164Y
FANCY CREEK MISS MUFFET 1122

BW	89
ADJ WW	705
WW RATIO	105

CE	BW	WW	YW	MILK	SCROT	CW	REA	MARB	TSI
11.5	-1.7	60	112	26	1.1	22	0.69	0.17	257.24

Double digit calving ease with negative birth and still plenty of grow to tip the scales at over 700#. Find him on sale day you won't be disappointed.

43 GS MR ATLAS 2311

TATTOO: 2311 BD: 1/5/23 POLLED REG: M989190

LT PATRIOT 4004 PLD
LT ATLAS 0251 PLD
LT MOLLY 7031 PLD
PVF RIDGE 7142
GS MS LEGACY
SC MIS BARBRA 1142 P ET

LT LEDGER 0332 P
LK MISS RIO 2119
LT RUSHMORE 8060 PLD
LT MOLLY 5339 PLD
SCC O'RAILLE 181C PLD
PVF CHISUM 1340
LT BRIDGER 9191 PLD
SWAN BARBRA M084 P ET

BW	75
ADJ WW	823
WW RATIO	103

CE	BW	WW	YW	MILK	SCROT	CW	REA	MARB	TSI
14.4	-2.7	70	134	30	1.7	38	0.9	0.13	277.64
	25%	20%	9%	15%	5%	7%	15%		8%

Honestly one of the better bulls in the sale. Excellent phenotype that is big outlined, correct in his makeup with a plenty of shape and stifle. Then look at his numbers to find that he ranks in the top 25% for 9 traits.

44 TS DISTANCE L377

TATTOO: L377 BD: 3/9/23 POLLED REG: M992545

WC MILESTONE 5223 P
CR MILESTONE 7220F11 ET
LT LOANN 7220 PLD
TR MR FIRE WATER 5792RET
WC SWEETHEART 237Z P ET
BAR S SWEETHEART 4321 ET

WC BENELLI 2134 P ET
WC LADY BLUE 0506 P
LT WYOMING WIND 4020 PLD
LT LOANN 2338 PLD
THOMAS OAHE WIND 0772ET P
THOMASSWISSERSWEET1764ET
CCR JACKPOT 1410KS PET
BALDRIDGE SWEETHEART 62H

BW	82
ADJ WW	740
WW RATIO	111

CE	BW	WW	YW	MILK	SCROT	CW	REA	MARB	TSI
7.6	-0.4	71	114	25	1.4	25	0.74	0.05	249.15
	15%				15%				

Big growth Milestone son that ranks in the top 15% for WW. He posted a ration of 111@WW you can count on him to add stellar growth to his calf crops.



Lot
43

SPRING YEARLING BULLS



Lot
45

45 DSL BANDIT 306

TATTOO: 306 BD: 3/7/23 POLLED REG: EM992207

LT RUSHMORE 8060 PLD
WC MONUMENTAL 5524 P
WC ASTA 0505 P
M6 GRID MAKER 104 PET
DSL JEWEL MAKER U 8
DSL DARLAS JEWEL P6

LT RIO BRAVO 3181 P
LT BRENDA'S EASE 3055PLD
LT BLUE VALUE 7903 ET
WC ASTA 8210
WCR SIR TRADITION 066
VCR MISS MAC IV 317
BOW IMPRESSIVE 2034M P
MERRIMAC JEWEL

BW
85
ADJ WW
754
WW RATIO
100

CE	BW	WW	YW	MILK	SCROT	CW	REA	MARB	TSI
11.2	-1.6	69	117	25	1.1	34	0.85	0.15	257.34
		25%				15%			

Square hipped and well-made son of Monumental and our leading donor female Jewel Maker. Massive ended and smooth shoulder he is impressive from any angle and one of the first picks of everyone who has been in the pen.

46 TS CASH DEVIL L315ET

TATTOO: L315ET BD: 2/4/23 POLLED REG: EM992708

HIGH BLUFF CASANOVA 13C
SCR CASANOVA 7107
SCR MISS MAPLE 9021
HIGH BLUFF CASANOVA 13C
KKK MISS NOVA 8323 ET
KKK MISS BLUE MOON 1346 P

SILVERSTREAM GEDDES G102
HIGH BLUFF ESPERENZA 15Y
SCR CHICO 1033
SCR MISS LEGACY 6170
SILVERSTREAM GEDDES G102
HIGH BLUFF ESPERENZA 15Y
SCM MARBLER P506
KKK MISS FULL MOON 840 P

BW
77
ADJ WW
782
WW RATIO
101

CE	BW	WW	YW	MILK	SCROT	CW	REA	MARB	TSI
7.3	-1.6	57	116	19	1.3	24	1	-0.07	260.74
					20%		5%		

Wide tracking huge ended bull that will certainly add the muscle and performance you demand. Full brother to lot 47.



47 TS CASH MAN L312ET

TATTOO: L312ET BD: 2/1/23 POLLED REG: EM992707

HIGH BLUFF CASANOVA 13C
SCR CASANOVA 7107
SCR MISS MAPLE 9021
HIGH BLUFF CASANOVA 13C
KKK MISS NOVA 8323 ET
KKK MISS BLUE MOON 1346 P

SILVERSTREAM GEDDES G102
HIGH BLUFF ESPERENZA 15Y
SCR CHICO 1033
SCR MISS LEGACY 6170
SILVERSTREAM GEDDES G102
HIGH BLUFF ESPERENZA 15Y
SCM MARBLER P506
KKK MISS FULL MOON 840 P

BW
85
ADJ WW
766
WW RATIO
100

CE	BW	WW	YW	MILK	SCROT	CW	REA	MARB	TSI
10.1	-1.3	64	111	19	1.1	28	0.98	-0.07	250.34
							6%		

Wide built, big topped son of Casanova. Double digit calving ease with a huge spread to YW. Ranks in the top 6% for REA. Full brother sells as lot 48.

48 DSL GOLD LUNCH 303

TATTOO: 303 BD: 3/2/23 POLLED REG: M992200

LT RIO BLANCO 1234 P VPI FREE LUNCH 708T VPI MISS DUCHESS 404 P FINK GOLD STANDARD 0153 DSL FANCY STANDARD 610 FANCY GREEK LADY DUKE 138 P	WCR PRIME CUT 764 PLD LT PRAIRIE MAID 4054 WCR PRIME CUT 764 PLD VCR MISS DUCHESS 703 PLD M6 NEW STANDARD 842 P ET FINKS MISS 25503575BUDET SCHRADER'S DUKE 164Y FANCY CREEK MISS MUFFET 1122	BW 79 ADJ YW 604 WW RATIO 90
---	--	--

CE	BW	WW	YW	MILK	SCROT	CW	REA	MARB	TSI
16.2	-3.9	60	117	19	1.5	35	0.57	0.3	265.43
9%	10%				15%	15%		6%	25%

An own son of the legendary Lunch Money AI bull. Balanced across the board with a strong maternal pedigree give you a variety of options for his offspring.

50 TS DSL SAVAGE 310

TATTOO: 310 BD: 3/16/23 POLLED REG: M992203

WC MONUMENTAL 5524 P TS SAVAGE H021 TS MISS SCHURR DISTANCE B438 LT LEDGER 0332 P MISS IKE LEDGER 8143 MISS IKE GRID 8028	LT RUSHMORE 8060 PLD WC ASTA 0505 P SANDCREEK LONG DISTANCE 2021 TS MS SCHURRTOP T39P LT BLUEGRASS 4017 P LT BRENDA 6120 PLD M6 GRID MAKER 104 PET MISS IKE MARBLER 2050	BW 80 ADJ YW 687 WW RATIO 102
--	---	---

CE	BW	WW	YW	MILK	SCROT	CW	REA	MARB	TSI
9.2	-0.9	71	131	21	1.3	36	0.91	0.16	272.72
		20%	15%		20%	10%	15%		15%

A consistent performer that has always sorted up to the top. Balanced design, excellent feet and legs with strong maternal genetics.

52 DSL BIG POPPY 309

TATTOO: 309 BD: 3/12/23 POLLED REG: M992204

EC RIVIERA 141 PLD EC BIG DADDY 305 PLD EC LEDGER'S LADY 305 PLD LT PATRIOT 4004 PLD DSL MS PATRIOT 706 DSL IMPRESSIVE GOLD 408	EC REVELATION 5030 PLD EC TENACITY 141 PLD LT LEDGER 0332 P EC-GF FLAWLESS 066 PLD LT LEDGER 0332 P LK MISS RIO 2119 FINK GOLD STANDARD 0153 DSL IMPRESSIVE S6	BW 87 ADJ YW 635 WW RATIO 95
--	---	--

CE	BW	WW	YW	MILK	SCROT	CW	REA	MARB	TSI
15.4	-3.1	61	108	23	1.2	25	0.57	0.13	249.31
15%	20%				25%				

A low birth weight option that is backed by awesome cow families. The Big Daddy offspring have really impressed us and can't wait for the next crop to hit the ground.

54 KKK TARGET 3301

TATTOO: 3301 BD: 2/24/23 POLLED REG: M991268

LKD SNIPER 5155 R/V MARKSMAN 7548 RENN/VISN MATRIARCH 5748C HIGH BLUFF CASANOVA 13C KKK MISS LUNAR 0303 KKK MISS RED MOON 5310	CCC ROCKET'S EDGE 203 PLD LKD MISS REX 316 HCR PATRIARCH 2502 PLD SCR MISS SMOKE P4748 PD SILVERSTREAM GEDDES G102 HIGH BLUFF ESPERENZA 15Y IKE SEBASTION 2151 KKK MISS BLUE MOON 1346 P	BW 75 ADJ YW 630 WW RATIO 100
---	---	---

CE	BW	WW	YW	MILK	SCROT	CW	REA	MARB	TSI
9.6	-0.9	66	111	12	1.1	18	0.86	0.03	249.3
								20%	

Classic genetics from the Sonderup program. Marksmen is a true performance bull that avid cattlemen and women trusted to produce.

49 DSL FULL RUSH 311

TATTOO: 311 BD: 3/23/23 POLLED REG: M992846

LT RUSHMORE 8060 PLD RENN FULL RUSH 906G BAR S SWEETHEART 2003 SCR TUFFY 0119 FC MS TUFFY 3202P SCR MISS KINGDOM 6016	LT RIO BRAVO 3181 P LT BRENDA'S EASE 3055PLD TR RZC PAPIR FIRE 9775 ET BALDRIDGE SWEETHEART 62H FC MARBLER 841 P SCR MISS KING MICKY 7055 SCR KINGDOM 1251 SCR MISS FRENCHY 0167	BW 85 ADJ YW 668 WW RATIO 99
--	---	--

CE	BW	WW	YW	MILK	SCROT	CW	REA	MARB	TSI
14.3	-2.1	59	102	28	0.7	19	0.84	0.08	244.42
20%				25%					

Foot Full Rush has been a great addition to our program. Adds the genotype and phenotype blended with excellent carcass quality. notes

51 TS DOC SILVER L341ET

TATTOO: L341ET BD: 2/24/23 POLLED REG: EM992675

LT RUSHMORE 8060 PLD CCC WC RESOURCE 417 P WC CCC BLUE GIRL 1528 P WC-HCR PEARL JAM 8050 P ET MISS HCR PEARL 0012 PLD MISS HCR SILVER 8000 PLD	LT RIO BRAVO 3181 P LT BRENDA'S EASE 3055PLD LT BLUE VALUE 7903 ET CCC BAD GIRLFRIEND U146 P ET LT BLUEGRASS 4017 P LT PEARL'S BREEZE 2275 P NWMSU DOC SILVER 362 PLD MISS HCR WENDY 6101 PLD	BW 79 ADJ YW 748 WW RATIO 96
---	--	--

CE	BW	WW	YW	MILK	SCROT	CW	REA	MARB	TSI
12.3	-1.8	66	109	28	0.9	23	0.72	0.27	252.35
								9%	

Straight from the ET program. This Resource son claims big spread from BW to YW with marbling in the top 10% of the breed.

53 DSL TRUE GRITT 312

TATTOO: 312 BD: 4/10/23 POLLED REG: M992202

PVF O'RAILEE 7137 PLD EC NITTY GRITTY 138 PLD EC DESTINY 138 PLD LT RUSHMORE 8060 PLD DSL MS RUSHMORE 801 DSL FULL UNO 622	SCC O'RAILEE 181C PLD PVF DAKOTA DIAMOND 1302 HAMM MOGO U23 EC GRETCHEN 4029 PLD LT RIO BRAVO 3181 P LT BRENDA'S EASE 3055PLD DSL FULL TRADITION 405 RCR MS UNO CHROME A042	BW 80 ADJ YW 732 WW RATIO 109
---	--	---

CE	BW	WW	YW	MILK	SCROT	CW	REA	MARB	TSI
14.8	-3.4	62	104	32	0.7	22	0.66	0.15	246.79
20%	15%			8%					

Calving ease and strong maternal genetics come together in 312. Can't miss pedigree with excellent genetic profile.





Lot
55

55 TS KING GEORGE 250B

TATTOO: 250B BD: 2/14/23 POLLED REG: MP5559

WC BRAVO 6121 P ET
WC BRAVO 8576 P
WC MS TURBO 5640 P ET

LT RIO BRAVO 3181 P
LT BRENDA'S EASE 3055PLD
LT BLUE VALUE 7903 ET
SCR MS TURBO 7003

BW
78
ADJ WW
720
WW RATIO
108

RED ANGUS/RED ANGUS

The first of the Red Angus half-bloods. Great build and thickness that is sure to produce bigtime replacement females or scale tipping steers.

57 TS RED KINGDOM 758

TATTOO: 758 BD: 2/14/23 POLLED REG: MP5560

WC BRAVO 6121 P ET
WC BRAVO 8576 P
WC MS TURBO 5640 P ET

LT RIO BRAVO 3181 P
LT BRENDA'S EASE 3055PLD
LT BLUE VALUE 7903 ET
SCR MS TURBO 7003

BW
68
ADJ WW
615
WW RATIO
92

RED ANGUS/RED ANGUS

An easy one to like that is soft middled with a ton of meat and muscle from behind. Still gives you incredible ability to make awesome replacements

56 TS CHIPPY 376TW

TATTOO: 376 BD: 3/12/23 POLLED REG: MP5558

WC BRAVO 6121 P ET
WC BRAVO 8576 P
WC MS TURBO 5640 P ET

LT RIO BRAVO 3181 P
LT BRENDA'S EASE 3055PLD
LT BLUE VALUE 7903 ET
SCR MS TURBO 7003

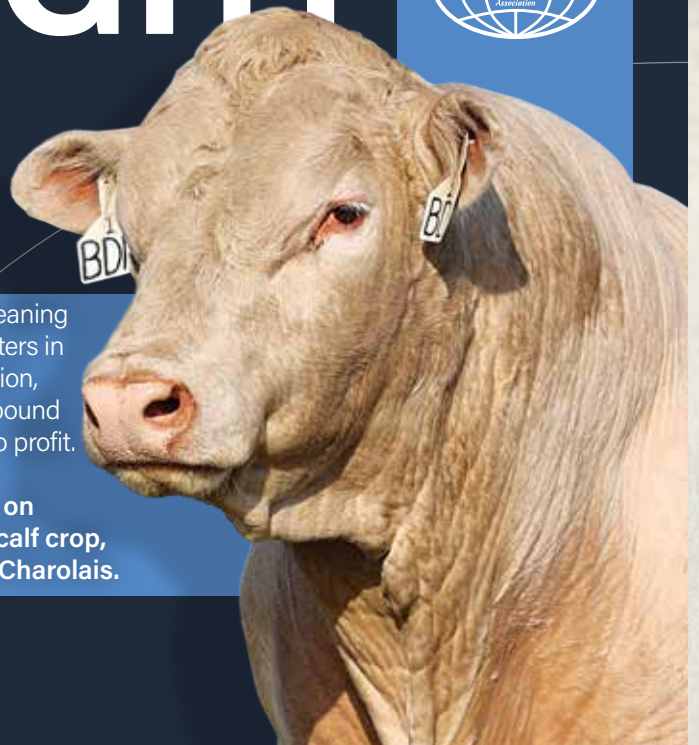
BW
60
ADJ WW
786
WW RATIO
100

RED ANGUS/RED ANGUS

The highest performance, biggest spread bull in the group. Came it at over 750 pounds at weaning and has not let up yet.

PAYWEIGHT STARTS

HERE



Superior weaning weight matters in your operation, and every pound translates to profit. To make a difference on your next calf crop, start with Charolais.

816.464.5977 • Fax: 816.464.5759
info@charolaisusa.com
www.CHAROLAISUSA.com



LOTS 101 - 109

9 COMMERCIAL CHAROLAIS/RED ANGUS TWO YEAR OLDS
DUE TO CALVE FEB - MAR 2024 TO LOW BW T&S CHAROLAIS BULLS
OFFERED BY T&S CHAROLAIS, FORMOSO, KS - 785-243-8600

LOTS 111-120

10 COMMERCIAL CHAROLAIS/ANGUS TWO YEAR OLDS DUE TO CALVE FEB - MAR 2024 TO LOW BW
DUE TO CALVE FEB - MAR 2024 TO LOW BW ANGUS BULLS.
OFFERED BY SCOTT ALBRIGHT - DELIA, KS - 785-554-0594



T&S STRNAD CHAROLAIS

1716 280th Rd

Formoso, KS 66942



T&S
STRNAD
CHAROLAIS

and Friends

ANNUAL PRODUCTION SALE

NEW SALE DATE
SATURDAY • MARCH 2ND, 2024
Sale 1:00 PM • Lunch 12:00 Noon